



ORTA DOĞU TEKNİK ÜNİVERSİTESİ
MIDDLE EAST TECHNICAL UNIVERSITY



Mission

Attaining excellence in research, education and public service for society, humanity and nature, in an environment nurturing creative and critical thinking, innovation, leadership, and universal values.

Vision

A leading international university that transforms its region and the world.

International Mandate and Vision



Türkiye's
premier state research
university

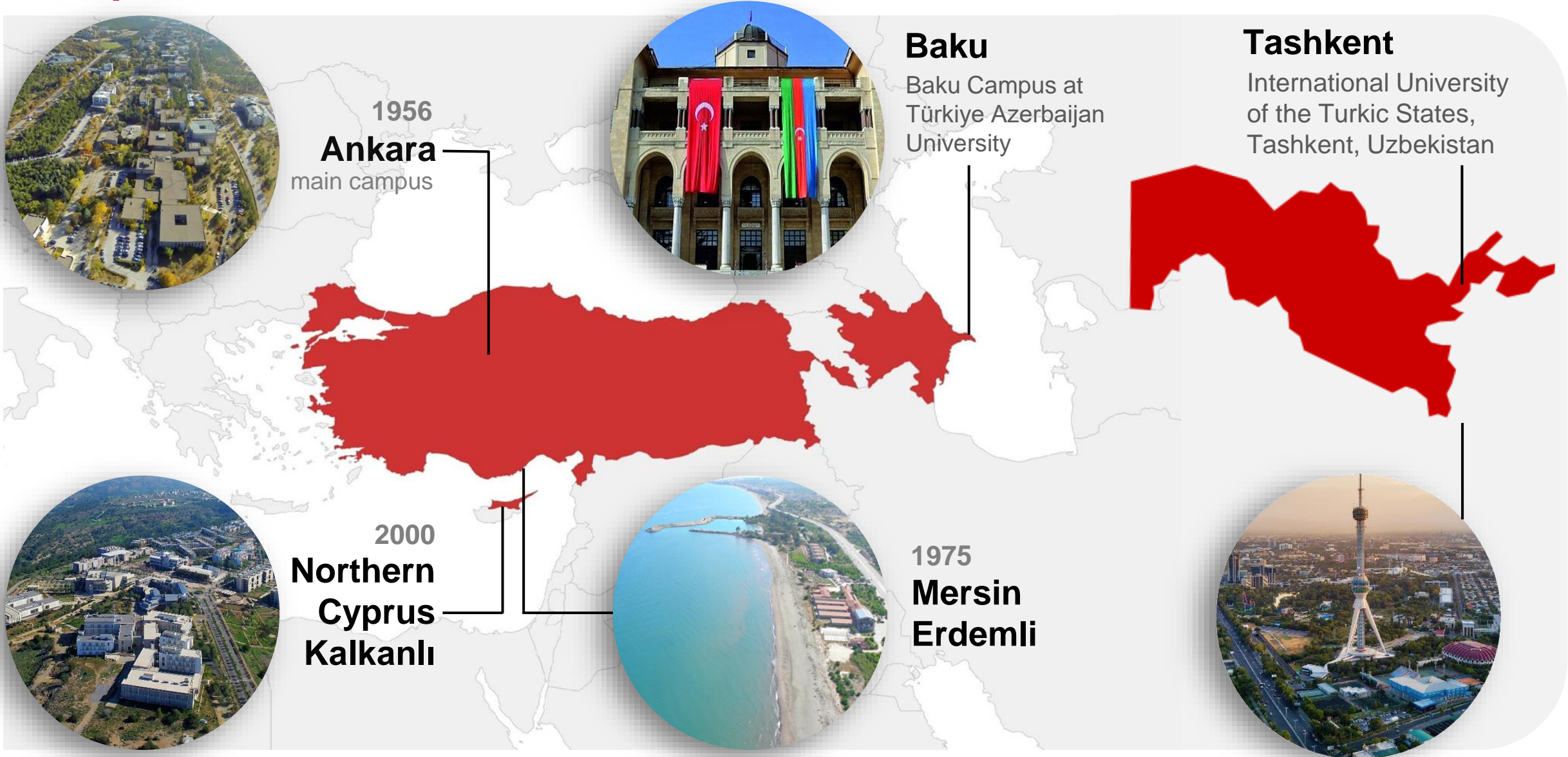


Established with an
international mandate
and an international vision

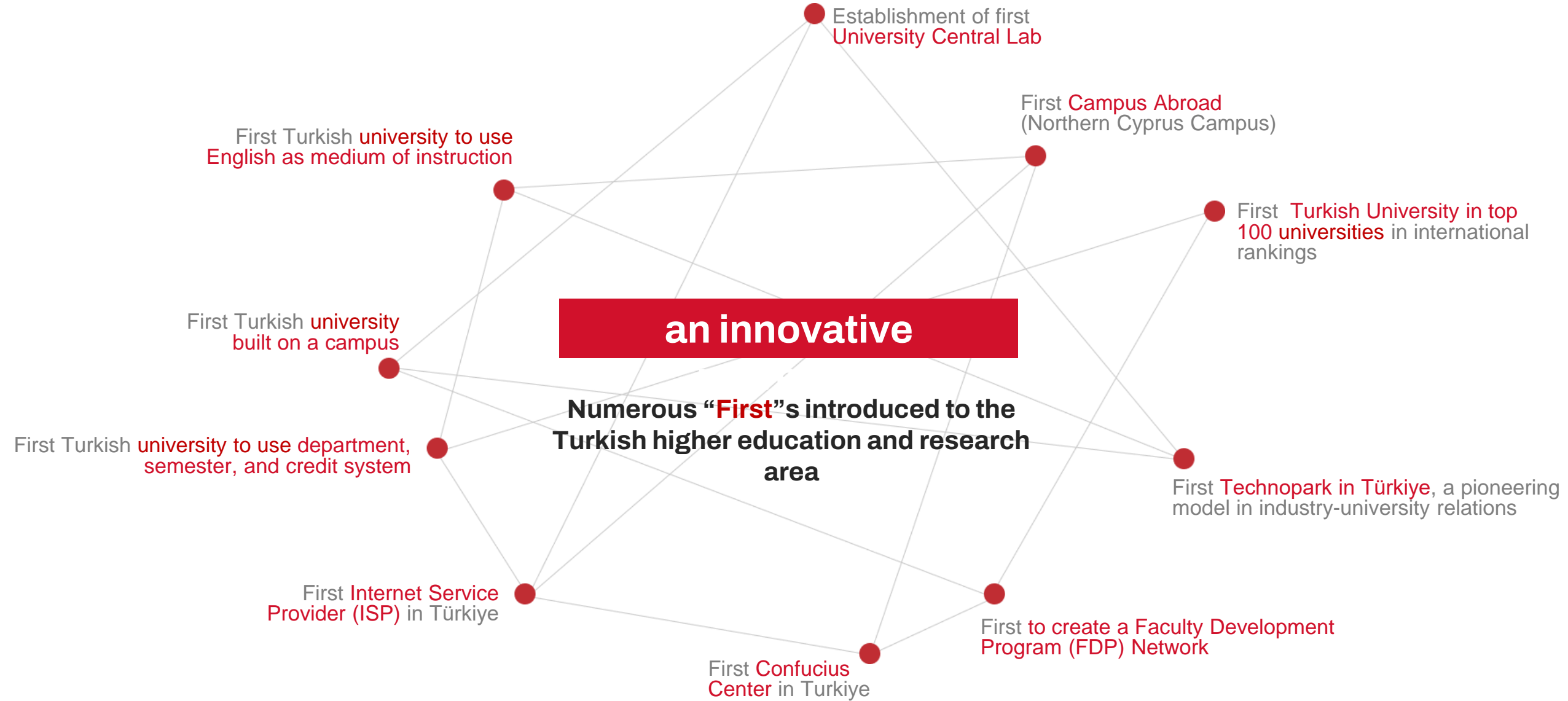


English as the
medium of instruction
at ALL levels and degrees

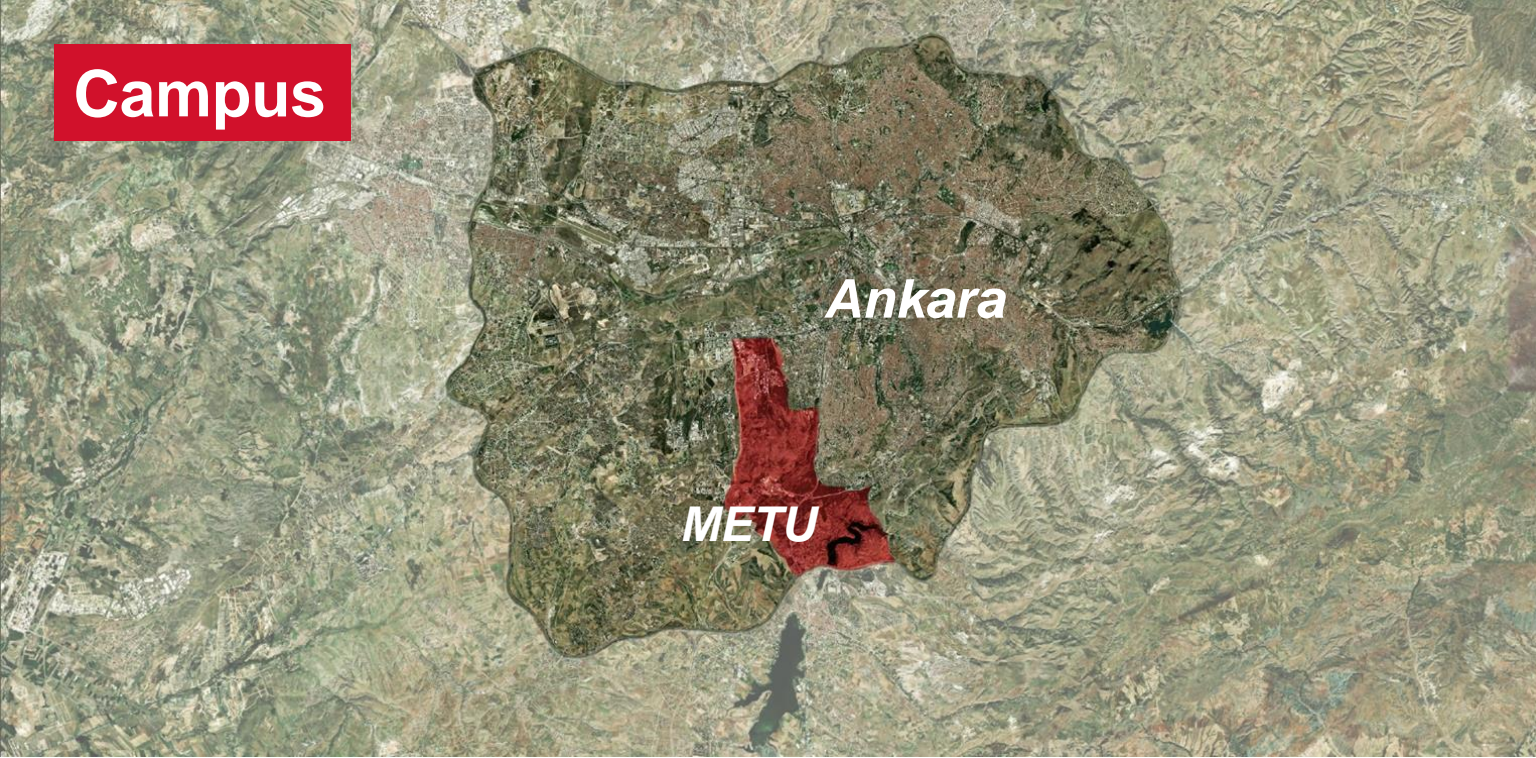
Campuses



Strengths of METU



Campus



campus area

4500 hectares
(45 km²)



forest area

3043 hectares
(33 km²)



lake area

45 km²

In 1956, within the 45 km² granted, a lake (Lake Eymir) was also allocated to Middle East Technical University for use.



Student Life

65.800 m²
*indoor & outdoor
sports area*



42
sports teams



140
*student cultural
groups*





5 faculties

currently enrolled students lie within **the 1% - 5%** of 2.000.000+ applicants

for more information:



Architecture

3

Arts & Sciences

10

Economics & Administrative Sciences

6

Education

10

Engineering

13

METU is the 1st university receiving ABET accreditation in Türkiye. All engineering programs have ABET accreditation.

total undergraduate programs

42

5 graduate schools

for more information:



Graduate School of Natural and Applied Sciences

56

Graduate School of Social Sciences

37

Graduate School of Informatics

10

Graduate School of Applied Mathematics

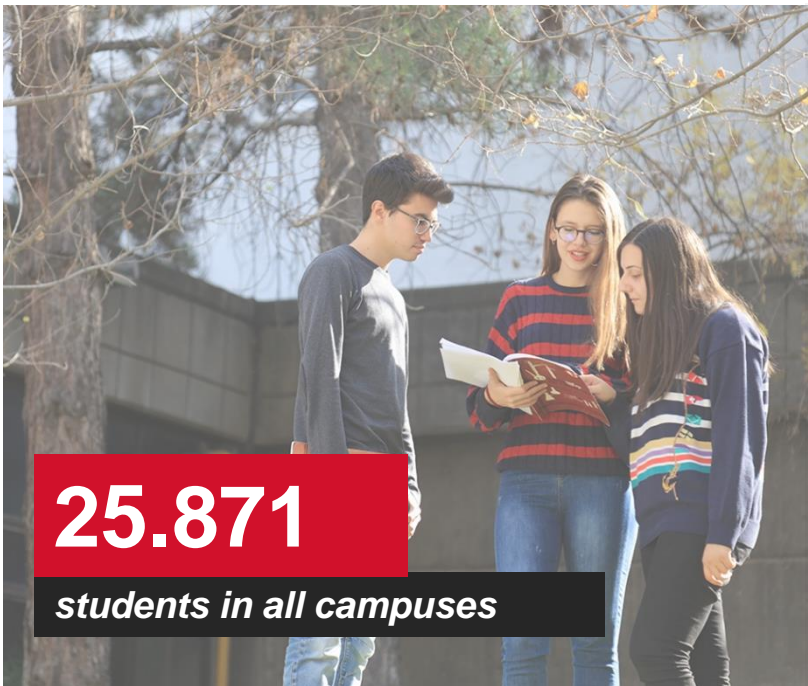
4

Institute of Marine Sciences

3

total graduate programs

110



25.871

students in all campuses



164.935

graduates from all campuses since 1960



222

programs

42

undergraduate programs

108

master's programs

72

doctoral programs

16

accredited programs

41

interdisciplinary programs



1600 international students

from 80 countries



1978

*academic personnel
as of 2024*



HR EXCELLENCE IN RESEARCH

682 faculty members

2446 administrative staff

378 professors

177 associate professors

127 assistant professors

344 lecturers and instructors

144 specialists

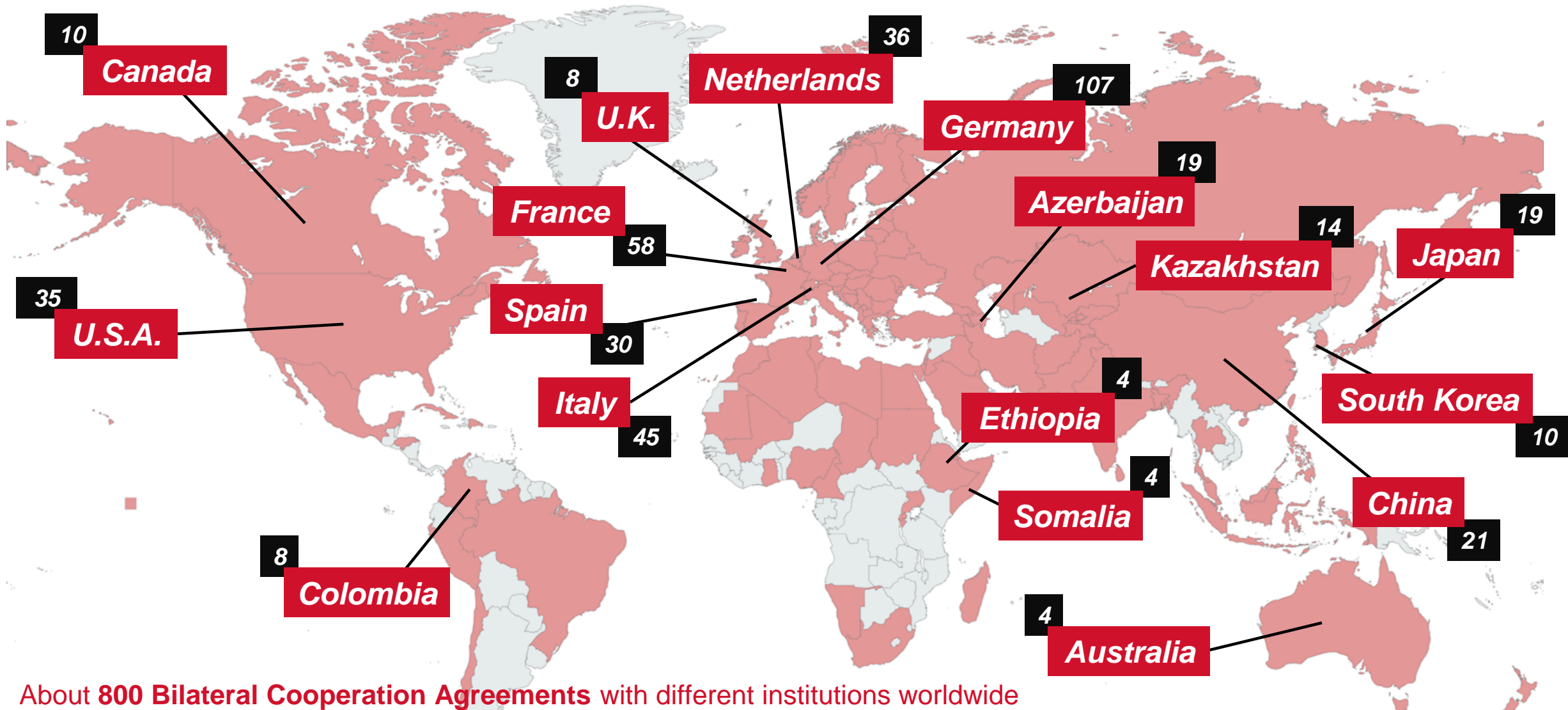
72 research assistants under article 35 (including OYP)

736 research assistants

31 international faculty members

METU is the first Turkish university to receive HR Logo, that is an important symbol for the international visibility and reliability of universities.





About **800 Bilateral Cooperation Agreements** with different institutions worldwide
(Erasmus, Mevlana, Bilateral Cooperation Protocols)

Each year, we send approximately **550 students** and **over 150 teaching/ administrative staff** abroad, while hosting around **250 incoming students** and **100 teaching/administrative staff** (an annual average of 1,000 participants in our mobility programs)

Created with mapchart.net

QS World University Rankings

2025 Results by subject

The sole **first place in 7 subjects** among universities in Türkiye and has been recognized as the top university in Türkiye across a total of 12 subjects.

Ranked 8th in Petroleum Engineering (only discipline from Türkiye ranking among the top 10), placed in the top 100 in two subjects, the top 200 in nine subjects, the top 300 in 19 subjects, and the top 400 in 22 subjects.

QS World University Rankings 2026



The graphic features the QS World University Rankings logo on the left, followed by text stating 'METU is the Leader in Türkiye! Ranken in the top 18% worldwide.' Below this, a paragraph mentions METU's climb from the 600+ band to 269th place over the past 5 years. On the right, two orange boxes highlight 'Academic Reputation 265th globally' and 'Employer Reputation 77th globally', with a note that METU is 'Türkiye's No. 1 in both indicators'.

QS WORLD UNIVERSITY RANKINGS

METU is the **Leader** in Türkiye!
Ranken in the **top 18% worldwide.**

Over the past 5 years, **METU has climbed from the 600+ band to 269th place**, achieving its highest-ever position through consistent progress.

Academic Reputation
265th globally

Employer Reputation
77th globally

Türkiye's No. 1
in both indicators

Times Higher Education (THE) World University Rankings



METU is ranked in the **351–400 band** in the THE World University Rankings 2026.

It is **1st among public universities** in Türkiye, and placed **189th for Research Environment**, **191st for Teaching**, and **205th for Industry**.

With its strong performance in research, teaching and industry, it ranks in **the top 18% worldwide**.



ODTÜ-TEKNOKENT

The first Technopark in Türkiye

One of the most successful Technopark

Ranked first for seven times (2011 – 2024) by the Ministry of Industry and Technology

~400 technology companies, with over 70% founded within ODTÜ TEKNOKENT

170,000 m² of total indoor space across 3 campuses

10,000+ research personnel

USD 550 million in annual technology exports as of 2024

Research Potential: Currently Ongoing Projects



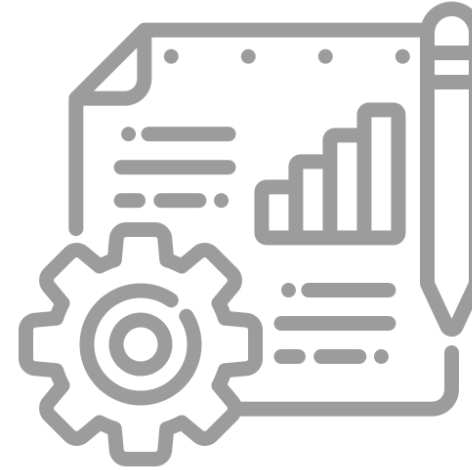
YÜKSEKÖĞRETİM KURULU
COUNCIL OF HIGHER EDUCATION

Selected as the **most successful research university** (among the 23) in the last **6 years** by CoHE (Council of Higher Education)

Approximately **25% of the annual budget** of the university is provided from competitive national and international research funds with its research and development activities.

146
BAP projects

303
revolving fund projects



180
TUBITAK projects

67
international cooperation projects

59.3 million €

(~2.371.288.613 TL)

total project budget

Research



European Research Council
Established by the European Commission

METU is the only public university in Türkiye with **6 European Research Council (ERC) projects**.

METU ranked 1st in Horizon Europe with receiving the highest number of projects.

Laboratories

31

research centers



549

research and training laboratories



Library

1.000.000+

resources



1.427.580

electronic books



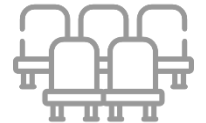
80.975

electronic journals



1.350

seating capacity of people



Interdisciplinary Research



*Center for Wind
Energy Research*



ROMER
Center for Robotics and Artificial Intelligence

*Center for Robotics and
Artificial Intelligence*



*Center for Space and
Accelerator Technologies*

31+

**interdisciplinary
research
centers**



*Center for Climate Change
and Sustainable
Development*



DİŞLİ, GÜÇ
AKTARMA
SİSTEMLERİ VE
TİTREŞİM
UYGULAMA VE
ARAŞTIRMA
MERKEZİ
DİMER

*Gear, Power Transmission
Systems and Vibration
Application and Research
Center*



*Center of Excellence for
Neuroscience and
Neurotechnology*



National-Level Research Infrastructure under Law N:6550

*Micro-Electro-
Mechanical Systems
(MEMS)*



*The Center for Solar Energy
Research and Applications*



METU Moon Rover Project (CHERI Mission)

1

Partnership Formation

Collaboration with Zhejiang University & STAR Vision established

2

Mission Integration

Part of China's Chang'e-8 lunar program

3

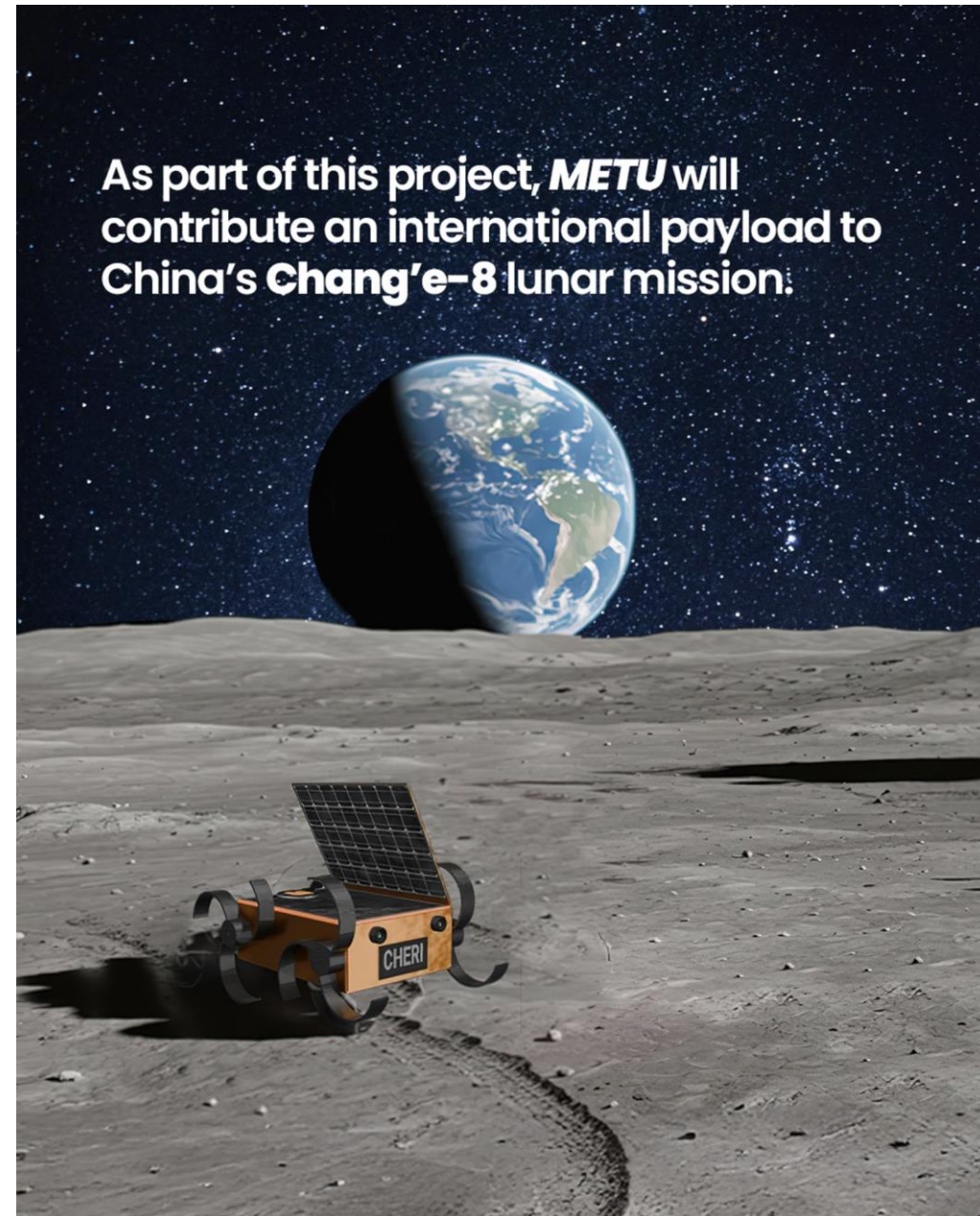
Target Deployment

Moon's South Pole mission in 2028

This groundbreaking project represents a joint effort between METU Aerospace Engineering and ROMER Faculty, demonstrating our excellence in robotics, systems integration, and remote sensing technologies.

The CHERI mission will deploy micro-rovers to explore the Moon's South Pole, marking a historic achievement in international space collaboration and Turkish aerospace capabilities.

As part of this project, **METU** will contribute an international payload to China's **Chang'e-8** lunar mission.



Research Potential: Currently Ongoing Projects

DEEP TRACE PROJECT

Marine expeditions continue as part of the ERC-funded DeepTrace project, which explores extreme habitats in the seas of Türkiye and the world.



1

Unveiling Earth's Hidden Metal Highways

DeepTrace investigates how life-supporting metals move and react across deep-sea interfaces

2

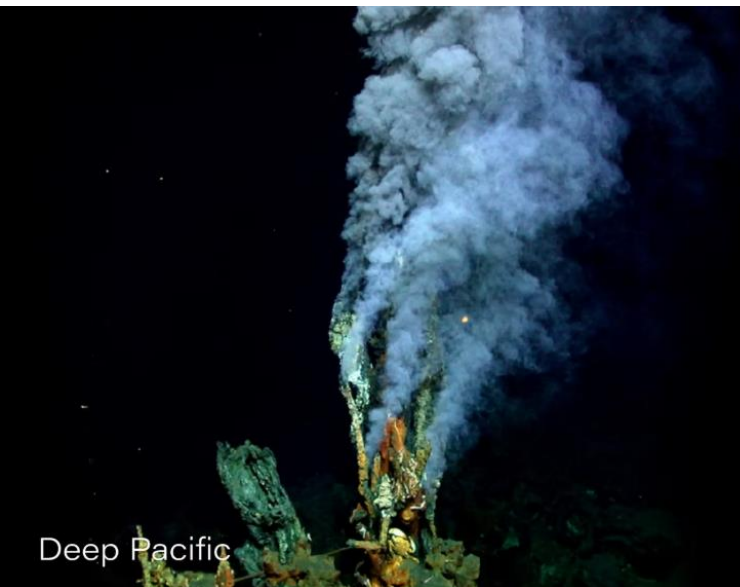
Nanoparticles as Cosmic Clues

Turns metal nanoparticles into tracers of life's chemistry — *a new window into life detection beyond Earth*

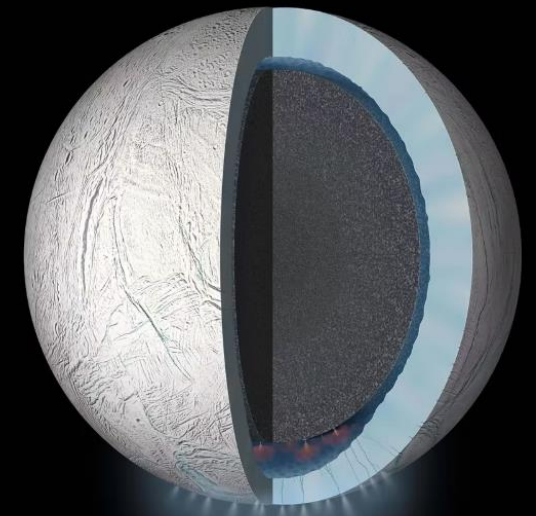
3

From Black Sea to Ocean Worlds:

Connects Earth's deep-sea ecosystems with the icy oceans of distant moons to explore habitability



Deep Pacific



GO SPACE PROJECT

GO Space, funded by ERC, stands as a pioneer goal-oriented communication systems for space networks, collaborating with experts to refine proposed communication strategies and address challenges in space communication.



1

Smarter Space Communication

GO SPACE builds next-generation communication systems to keep spacecraft and satellites connected

2

Goal-Based Data Flow

Sends data with purpose — prioritizing only what's needed for each task to ensure reliable and efficient communication in space

3

From Earth to Deep Space

Creates smart, energy-saving networks for future space and 6G systems



Together we can
change the world.



ORTA DOĞU TEKNİK ÜNİVERSİTESİ
MIDDLE EAST TECHNICAL UNIVERSITY