



ORTA DOĞU TEKNİK ÜNİVERSİTESİ
MIDDLE EAST TECHNICAL UNIVERSITY



Mission

Attaining excellence in research, education and public service for society, humanity and nature, in an environment nurturing creative and critical thinking, innovation, leadership, and universal values.

Vision

A leading international university that transforms its region and the world.

International Mandate and Vision



Türkiye's
premier state research
university



Established with an
international mandate
and an international vision



English as the
medium of instruction
at ALL levels and degrees

Campuses

1956

Ankara

main campus



2000

Northern Cyprus Kalkanlı



1975

Mersin Erdemli

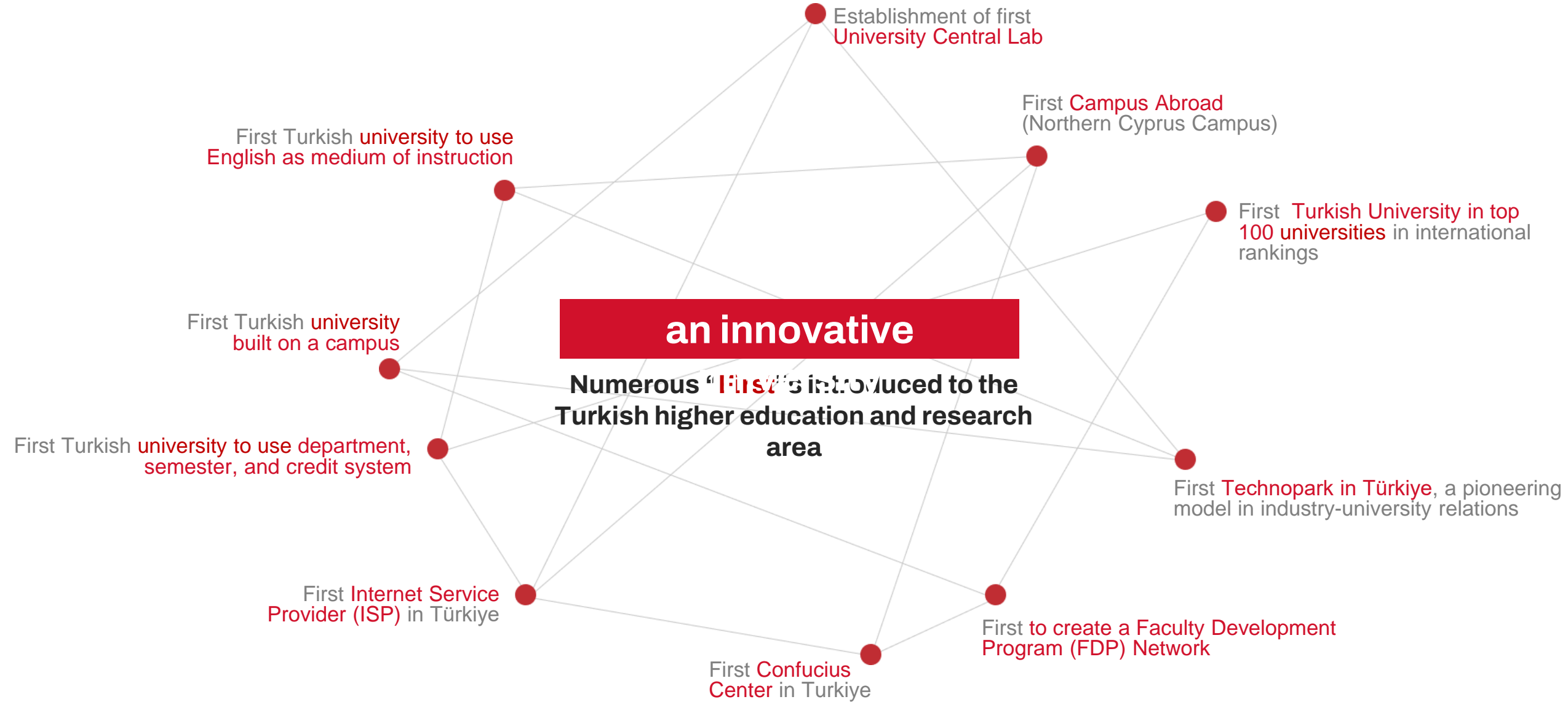


*Baku Campus at Türkiye
Azerbaijan University*

Baku



Strengths of METU



Campus



campus area

4500 hectares
(45 km²)



forest area

3043 hectares
(33 km²)



lake area

45 km²

In 1956, within the 45 km² granted, a lake (Lake Eymir) was also allocated to Middle East Technical University for use.



Student Life

65.800 m²
indoor & outdoor sports area



42
sports teams



110
student cultural groups



MIDDLE EAST TECHNICAL UNIVERSITY



5 faculties

currently enrolled students lie within **the 1% - 5%** of 2.000.000+ applicants

for more information:



Architecture	3
Arts & Sciences	10
Economics & Administrative Sciences	6
Education	10
Engineering	13

METU is the 1st university receiving ABET accreditation in Türkiye. All engineering programs have ABET accreditation.

total undergraduate programs **42**

5 graduate schools

for more information:



Graduate School of Natural and Applied Sciences	52
Graduate School of Social	38
Graduate School of	12
Graduate School of Applied	4
Institute of Marine	5

total graduate programs **111**



25.78

students



154.89

graduates

222

programs

42

undergraduate programs

106

master's programs

72

doctoral programs

16

accredited programs

47

interdisciplinary programs



~1500 international students

countries



1978

*academic personnel
as of 2024*



HR EXCELLENCE IN RESEARCH

682 faculty members

2446 administrative staff

378 professors

177 associate professors

127 assistant professors

344 lecturers and instructors

144 specialists

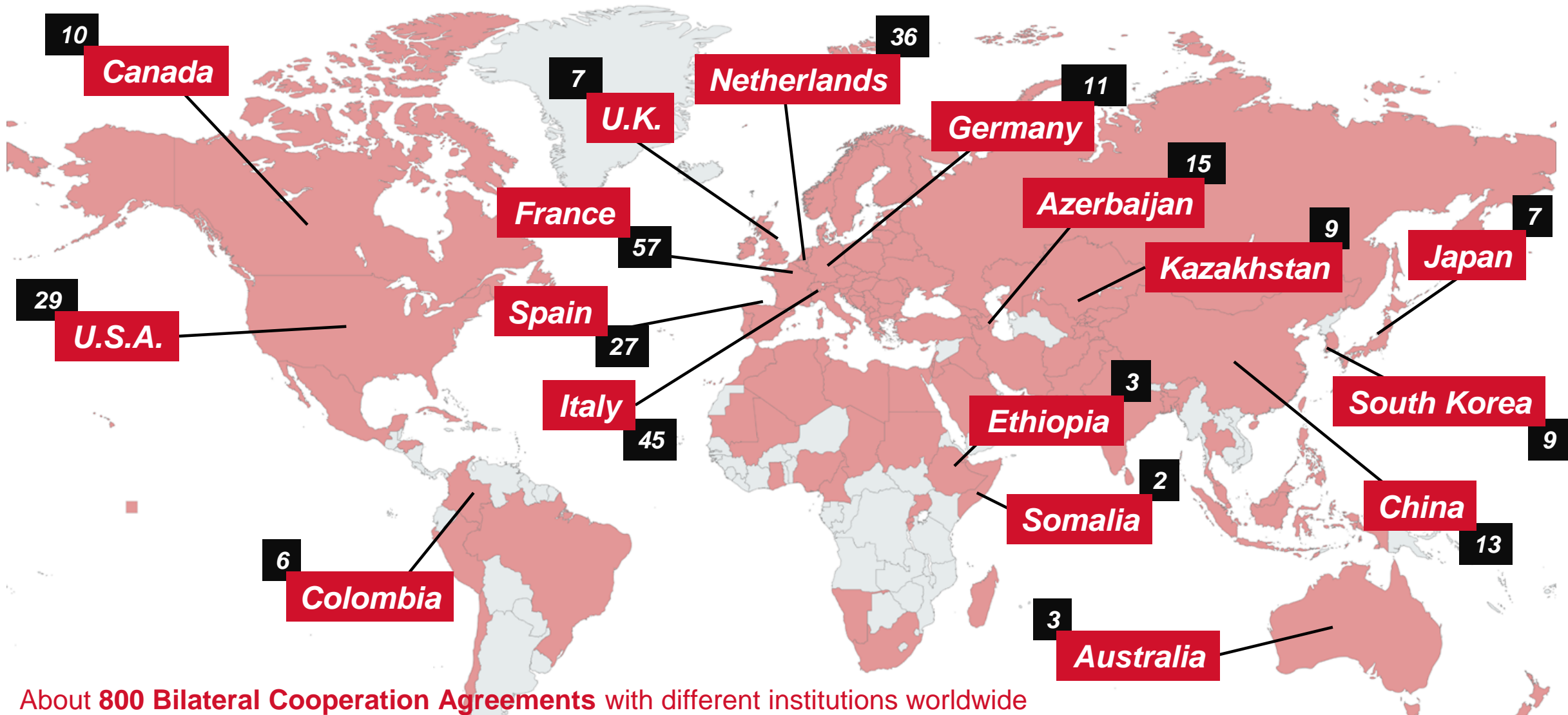
72 research assistants under article 35 (including OYP)

736 research assistants

31 international faculty members

METU is the first Turkish university to receive HR Logo, that is an important symbol for the international visibility and reliability of universities.





About **800 Bilateral Cooperation Agreements** with different institutions worldwide
(Erasmus, Mevlana, Bilateral Cooperation Protocols)

Each year, we send approximately **550 students** and **over 150 teaching/ administrative staff** abroad, while hosting around **250 incoming students** and **100 teaching/administrative staff** (an annual average of 1,000 participants in our mobility programs)

Created with mapchart.net

QS World University Rankings

2025 Results by subject

The sole **first place in 7 subjects** among universities in Türkiye and has been recognized as the top university in Türkiye across a total of 12 subjects.

Ranked 8th in Petroleum Engineering (only discipline from Türkiye ranking among the top 10), placed in the top 100 in two subjects, the top 200 in nine subjects, the top 300 in 19 subjects, and the top 400 in 22 subjects.

QS World University Rankings 2026



The banner features the QS logo and the text 'WORLD UNIVERSITY RANKINGS' on the left. The main text states: 'METU is the **Leader** in Türkiye! Ranken in the **top 18% worldwide.**' Below this, it says: 'Over the past 5 years, **METU has climbed from the 600+ band to 269th place**, achieving its highest-ever position through consistent progress.' On the right side, there are two orange boxes: the top one says 'Academic Reputation **265th globally**' and the bottom one says 'Employer Reputation **77th globally**'. At the bottom right, it states 'Türkiye's No. 1 in both indicators'.

QS WORLD UNIVERSITY RANKINGS

METU is the **Leader** in Türkiye!
Ranken in the **top 18% worldwide.**

Over the past 5 years, **METU has climbed from the 600+ band to 269th place**, achieving its highest-ever position through consistent progress.

Academic Reputation
265th globally

Employer Reputation
77th globally

Türkiye's No. 1
in both indicators

Times Higher Education (THE) World University Rankings





ODTÜ-TEKNOKENT

The first Technopark in Türkiye

One of the most successful Technopark

Ranked first for seven times (2011 – 2024) by the Ministry of Industry and Technology

~400 technology companies, with over 70% founded within ODTÜ TEKNO KENT

170,000 m² of total indoor space across 3 campuses

10,000+ research personnel

USD 550 million in annual technology exports as of 2024

Research Potential: Currently Ongoing Projects



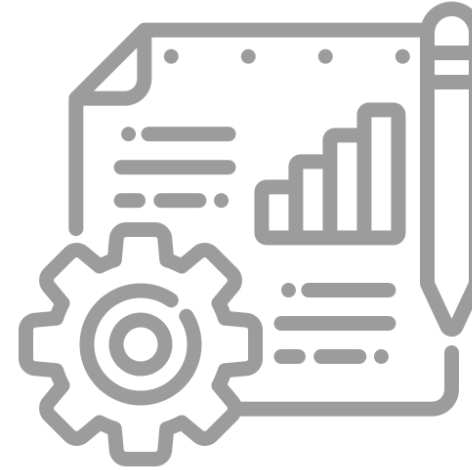
YÜKSEKÖĞRETİM KURULU
COUNCIL OF HIGHER EDUCATION

Selected as the **most successful research university** (among the 23) in the last **6 years** by CoHE (Council of Higher Education)

Approximately **25% of the annual budget** of the university is provided from competitive national and international research funds with its research and development activities.

146
BAP projects

303
revolving fund projects



180
TUBITAK projects

67
international cooperation projects

59.3 million €

(~2.371.288.613 TL)

total project budget

Research



European Research Council
Established by the European Commission

METU is the only public university in Türkiye with **6 European Research Council (ERC) projects**.

METU ranked 1st in Horizon Europe with receiving the highest number of projects.

Laboratories

31

research centers



549

research and training laboratories



Library

1.000.000+

resources



1.427.580

electronic books



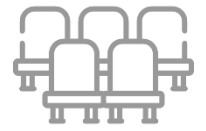
80.975

electronic journals



1.350

seating capacity of people



Interdisciplinary Research



*Center for Wind
Energy Research*



ROMER
Center for Robotics and Artificial Intelligence

*Center for Robotics and
Artificial Intelligence*



*Center for Space and
Accelerator Technologies*

31+

**interdisciplinary
research
centers**



*Center for Climate Change
and Sustainable
Development*



DİŞLİ, GÜÇ
AKTARMA
SİSTEMLERİ VE
TİTREŞİM
UYGULAMA VE
ARAŞTIRMA
MERKEZİ
DİMER

*Gear, Power Transmission
Systems and Vibration
Application and Research
Center*



*Center of Excellence for
Neuroscience and
Neurotechnology*



National-Level Research Infrastructure under Law N:6550

*Micro-Electro-
Mechanical Systems
(MEMS)*



*The Center for Solar Energy
Research and Applications*





Together we can
change the world.



ORTA DOĞU TEKNİK ÜNİVERSİTESİ
MIDDLE EAST TECHNICAL UNIVERSITY