



ORTA DOĞU TEKNİK ÜNİVERSİTESİ  
MIDDLE EAST TECHNICAL UNIVERSITY





## Mission

Attaining excellence in research, education and public service for society, humanity and nature, in an environment nurturing creative and critical thinking, innovation, leadership, and universal values.

## Vision

A leading international university that transforms its region and the world.

# International Mandate and Vision



Türkiye's  
*premier state* research  
university



Established with an  
*international mandate*  
and an international vision



English as the  
*medium of instruction*  
at ALL levels and degrees



# Campuses

1956

**Ankara**

*main campus*



2000

**Northern Cyprus Kalkanlı**



1975

**Mersin Erdemli**



*Baku Campus at Türkiye  
Azerbaijan University*

**Baku**



# Strengths of METU





## Campus



*campus area*

**4500 hectares**  
(45 km<sup>2</sup>)



*forest area*

**3043 hectares**  
(33 km<sup>2</sup>)



*lake area*

**45 km<sup>2</sup>**

*In 1956, within the 45 km<sup>2</sup> granted, a lake (Lake Eymir) was also allocated to Middle East Technical University for use.*



## Student Life

**65.800 m<sup>2</sup>**  
*indoor & outdoor  
sports area*



**42**  
*sports teams*



**110**  
*student cultural  
groups*



MIDDLE EAST TECHNICAL UNIVERSITY





# 5 faculties

currently enrolled students lie within **the 1% - 5%** of 2.000.000+ applicants

for more information:



Architecture

3

Arts & Sciences

10

Economics & Administrative Sciences

6

Education

10

Engineering

*METU is the 1st university receiving ABET accreditation in Türkiye. All engineering programs have ABET accreditation.*

13

total undergraduate programs

**42**

# 5 graduate schools

for more information:



Graduate School of Natural and Applied Sciences

52

Graduate School of Social Sciences

38

Graduate School of Informatics

12

Graduate School of Applied Mathematics

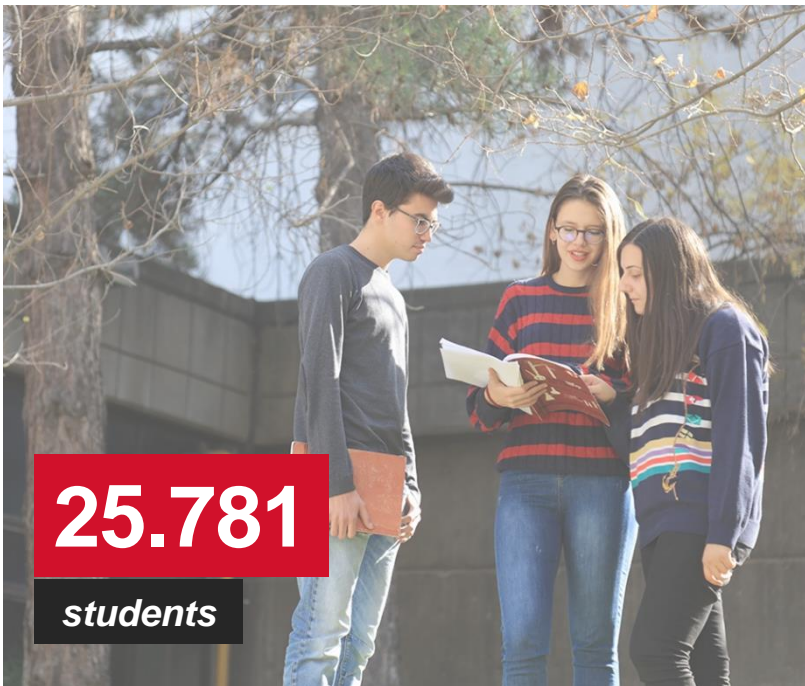
4

Institute of Marine Sciences

5

total graduate programs

**111**



**25.781**

**students**



**154.897**

**graduates**

**222**

**programs**

**42**

**undergraduate programs**

**106**

**master's programs**

**72**

**doctoral programs**

**16**

**accredited programs**

**47**

**interdisciplinary programs**



**~1500 international students**

**from 84 countries**





**1978**

*academic personnel  
as of 2024*



HR EXCELLENCE IN RESEARCH

**682** faculty members

**2446** administrative staff

**378** professors

**177** associate professors

**127** assistant professors

**344** lecturers and instructors

**144** specialists

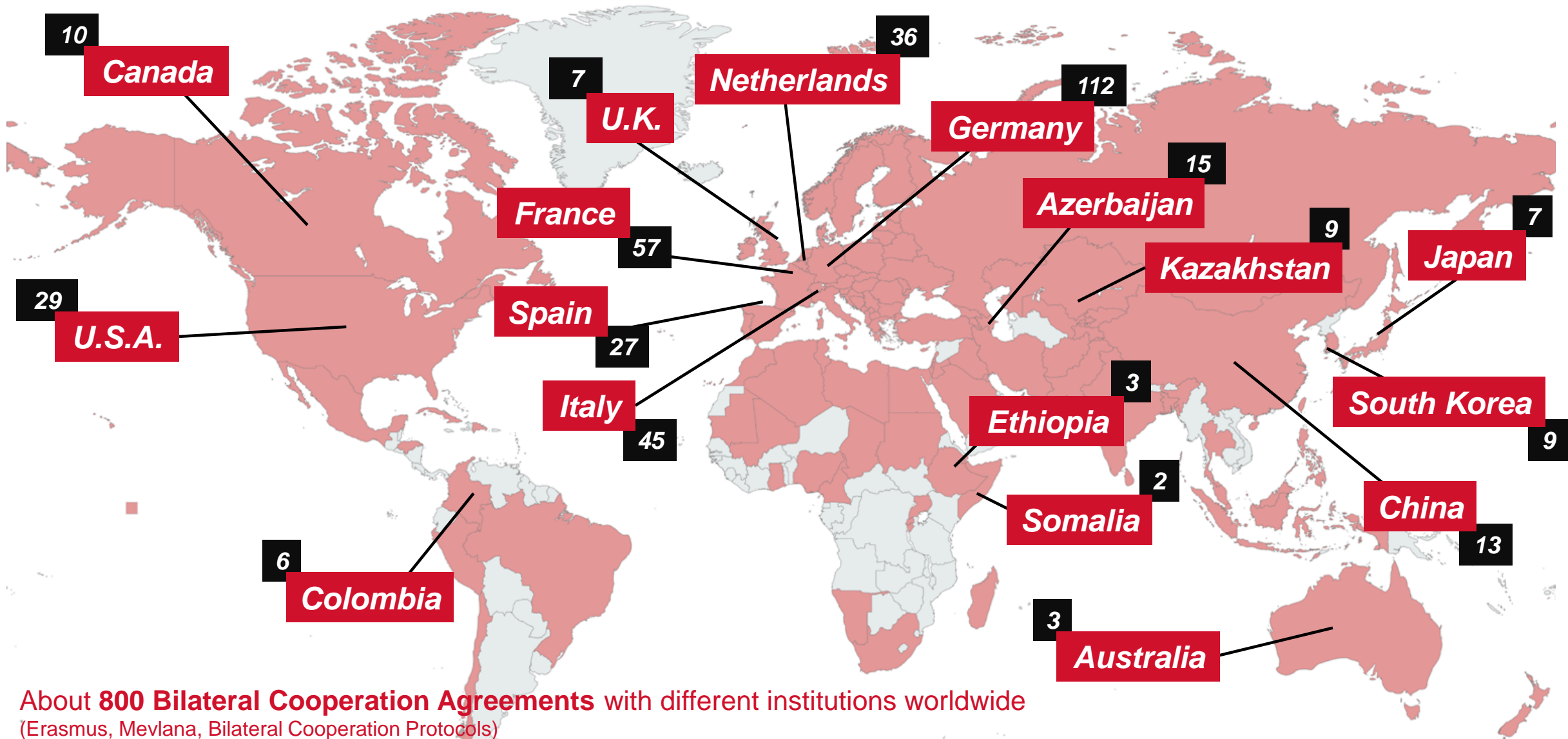
**72** research assistants under article 35 (including OYP)

**736** research assistants

**31** international faculty members

*METU is the first Turkish university to receive HR Logo, that is an important symbol for the international visibility and reliability of universities.*





About **800 Bilateral Cooperation Agreements** with different institutions worldwide  
(Erasmus, Mevlana, Bilateral Cooperation Protocols)

Each year, we send approximately **550 students** and **over 150 teaching/ administrative staff** abroad,  
while hosting around **250 incoming students** and **100 teaching/administrative staff**  
(an annual average of 1,000 participants in our mobility programs)

Created with mapchart.net





# QS World University Rankings

## 2025 Results by subject

The sole **first place in 7 subjects** among universities in Türkiye and has been recognized as the top university in Türkiye across a total of 12 subjects.

**Ranked 8th in Petroleum Engineering (only discipline from Türkiye ranking among the top 10)**, placed in the top 100 in two subjects, the top 200 in nine subjects, the top 300 in 19 subjects, and the top 400 in 22 subjects.

## QS World University Rankings 2026



The graphic features the QS logo and the text 'WORLD UNIVERSITY RANKINGS' on the left. The main text states 'METU is the **Leader** in Türkiye! Ranken in the **top 18% worldwide.**' Below this, it says 'Over the past 5 years, **METU has climbed from the 600+ band to 269th place**, achieving its highest-ever position through consistent progress.' On the right, two orange boxes highlight 'Academic Reputation **265th globally**' and 'Employer Reputation **77th globally**', with a note at the bottom: 'Türkiye's No. 1 in both indicators'.

**QS** WORLD UNIVERSITY RANKINGS

**METU** is the **Leader** in Türkiye!  
Ranken in the **top 18% worldwide.**

Over the past 5 years, **METU has climbed from the 600+ band to 269th place**, achieving its highest-ever position through consistent progress.

Academic Reputation  
**265th globally**

Employer Reputation  
**77th globally**

**Türkiye's No. 1**  
in both indicators

# Times Higher Education (THE) World University Rankings







# ODTÜ-TEKNOKENT

The first Technopark in Türkiye

One of the most successful Technopark

Ranked first for seven times (2011 – 2024) by the Ministry of Industry and Technology

~400 technology companies, with over 70% founded within ODTÜ TEKNOKENT

170,000 m<sup>2</sup> of total indoor space across 3 campuses

10,200 research personnel

USD 550 million in annual technology exports as of 2024

# Research Potential



Selected as the **most successful research university** (among the 23) in the last **6 years** by CoHE (Council of Higher Education)

Approximately **25% of the annual budget** of the university is provided from competitive national and international research funds with its research and development activities.

**146**  
*BAP projects*

**303**  
*revolving fund projects*



**141**  
*TUBITAK projects*

**37**  
*international cooperation projects*

**46.71 million USD**

( ~1.812.402.503 TL )  
*total project budget*



# Research



**European Research Council**  
Established by the European Commission

METU is the only public university in Türkiye with **6 European Research Council (ERC) projects**.

METU ranked 1st in Horizon Europe with receiving the highest number of projects.

## Laboratories

**31**

*research centers*



**549**

*research and training laboratories*



## Library

**1.000.000+**

*resources*



**1.427.580**

*electronic books*



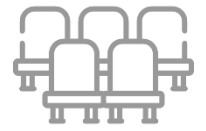
**80.975**

*electronic journals*



**1.350**

*seating capacity of people*



# Interdisciplinary Research



*Center for Wind  
Energy Research*



**ROMER**  
Center for Robotics and Artificial Intelligence

*Center for Robotics and  
Artificial Intelligence*



*Center for Space and  
Accelerator Technologies*

**31+**

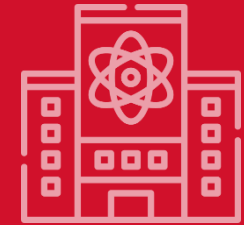
***interdisciplinary  
research centers***

*Center for Climate Change  
and Sustainable  
Development*



DİŞLİ, GÜÇ  
AKTARMA  
SİSTEMLERİ VE  
TİTREŞİM  
UYGULAMA VE  
ARAŞTIRMA  
MERKEZİ  
**DİMER**

*Gear, Power Transmission  
Systems and Vibration Application  
and Research Center*



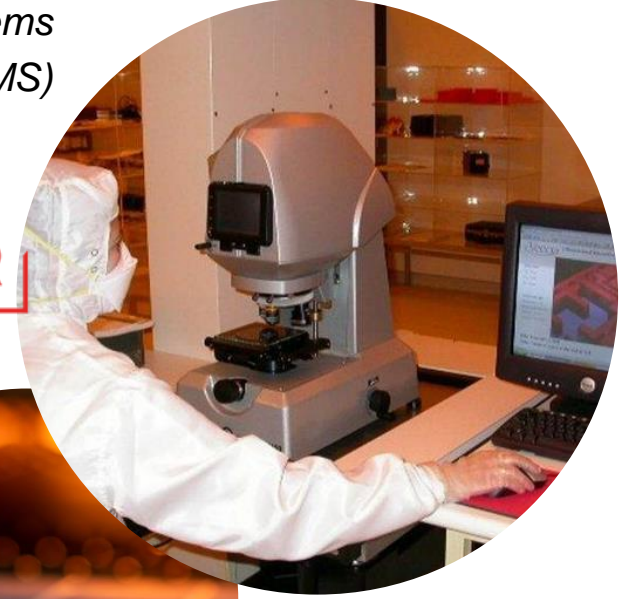
*Center of Excellence for  
Neuroscience and  
Neurotechnology*





# National-Level Research Infrastructure under Law N:6550

*Micro-Electro-  
Mechanical Systems  
(MEMS)*



*The Center for Solar Energy  
Research and Applications*





*Together we can*  
**change the world.**



ORTA DOĞU TEKNİK ÜNİVERSİTESİ  
MIDDLE EAST TECHNICAL UNIVERSITY