



METU/ODTÜ at first glance

- A comprehensive state university with three campuses.
- English as the only language of instruction in all degree programs.
- ~26,000 students in 3 campuses.
- Availability of a variety of major, minor and double-major programs and wide spectrum of interdisciplinary graduate programs:
 - 5 faculties offering 42 undergraduate degree programs
 - 5 graduate schools offering 108 masters and 72 Ph.D. programs
 - 15 undergraduate and 6 graduate programs at METU Northern Cyprus
- Majority of METU undergraduate students received from the top 1-5% of ~2,500,000+ applicants annually taking the National University Entrance Examination.
- Over 700 world-class full-time faculty members (with 70% of all having earned their PhD degrees from reputable universities abroad) and over 340 lecturers & 2,000 additional research staff.
- More than 165,000 of METU alumni hold senior management positions in important institutions in more than 140 countries, and carry-on research, education and entrepreneurship activities.



Pioneering university with numerous firsts in its history

- First Turkish University in top 100 universities in international rankings (THE: 2014-2015, 85th & 93 in education in THE 2021 by subject)
- Establishment of the first University Central Lab
- First Turkish university to use English as medium of instruction
- First Turkish university built on a campus
- First Technopark in Türkiye, a pioneering model in industry-university relations
- First Turkish university to use department, semester, and credit system
- First Internet Service Provider (ISP) in Türkiye (served as the DNS authority until May 2019)
- First Campus Abroad (Northern Cyprus Campus)
- First Confucius Center in Türkiye
- First to create a Faculty Development Program (FDP-ÖYP) Network (2001-...): *Through this Turkish Council of Higher Education (TCHE) program, METU has produced 600 PhD's who now are faculty members in newly established universities around Türkiye.*





METU/ODTÜ as a leading international university

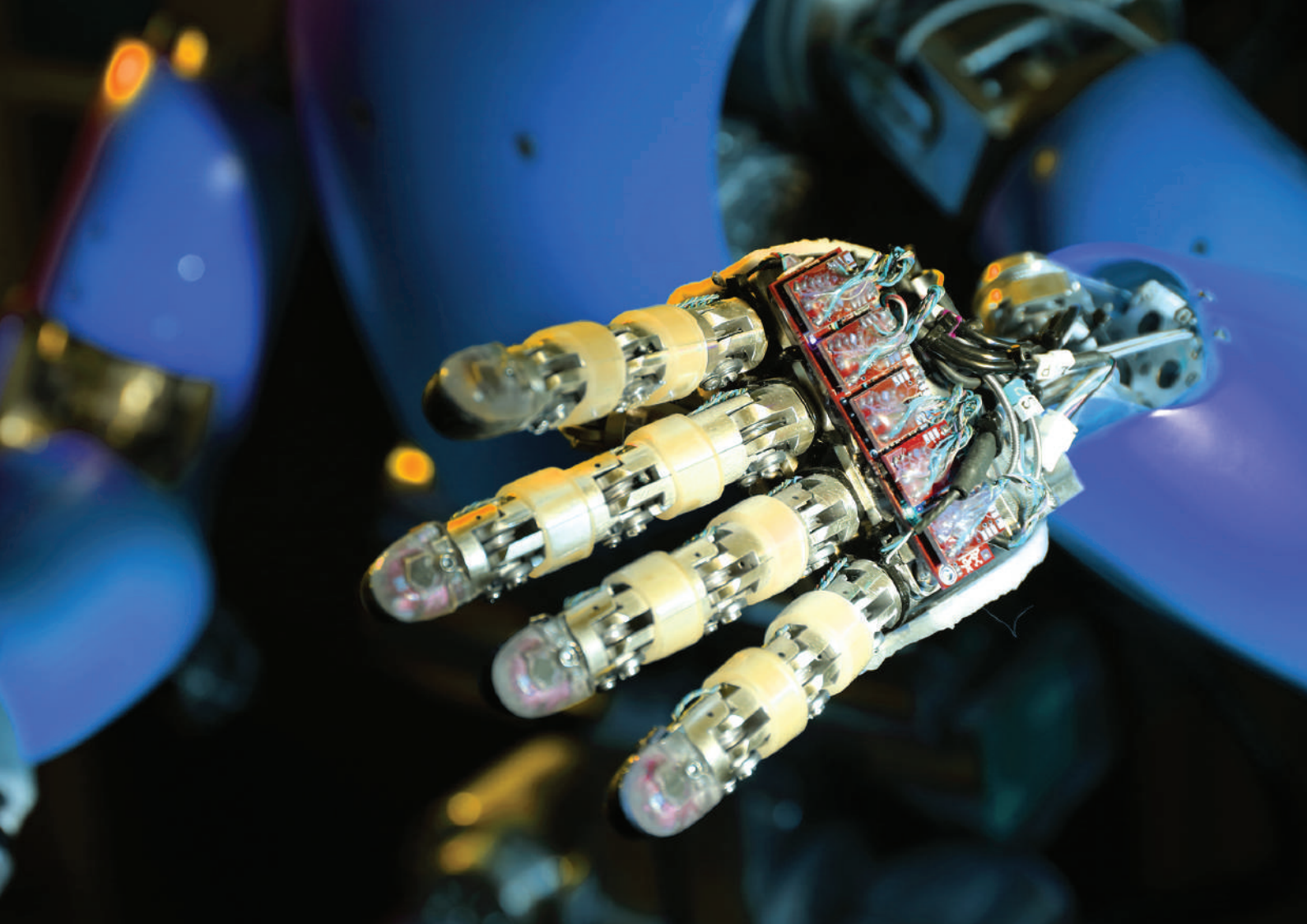
- METU has a vision to be a leading international university that transforms its region and the world.
- METU is Türkiye's premier state university rated among the top world universities in several fields/rankings over the years:
- METU has achieved a global ranking of 269th in the "QS 2026 World University Rankings."
- In the QS 2026 subject rankings, METU's notable achievements include:
 - Top 10 placement in Petroleum Engineering (World: 10).
 - Top 100 in 4 subjects.
 - Top 200 in 13 subjects.
 - Top 300 in 20 subjects.
 - Top 400 in 24 subjects.



METU/ODTÜ as a leading international university

- METU is ranked in the 351-400 band in the THE World University Rankings.
- It is the 1st public universities in Turkiye and placed:
 - 189th for Research Environment.
 - 191st for Teaching.
 - 205th for Industry.
- In the 2025 THE Impact Rankings METU is ranked 96th globally.
- In the 2026 THE Subject Rankings METU is ranked 1th in Turkiye in 7 out of the 9 subject areas.

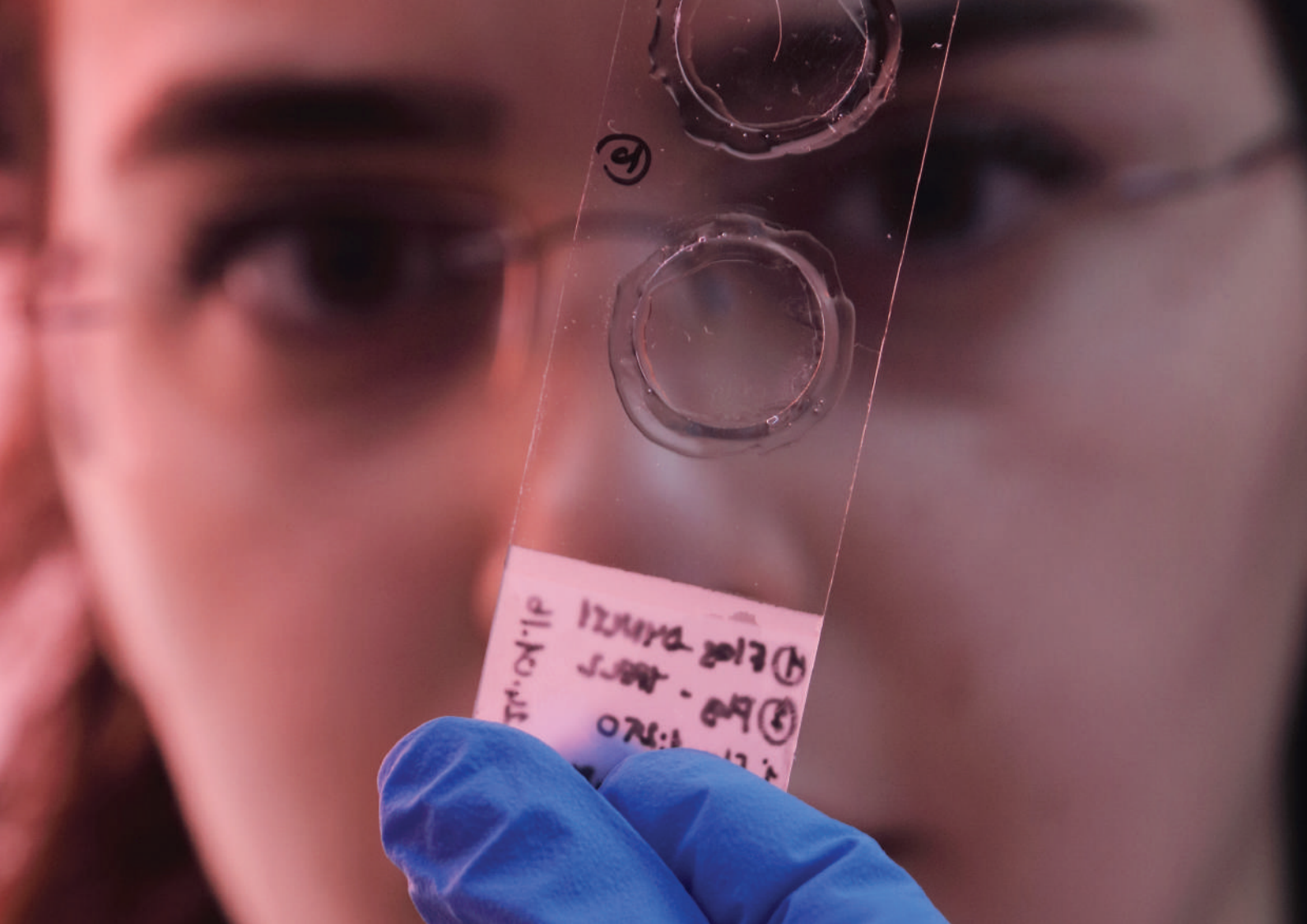
- Recipient of Turkish Higher Education Council's (YÖK) Excellence in Academia Award for International Collaboration with CERN.
- Over 1,600 international students from 80 different countries studying toward a myriad of academic degrees in three campuses.
- 4,500 + international undergraduate students apply each year with 13% acceptance rate.
- Approximately 800+ bilateral exchange and cooperation agreements.
- ~1000 mobility flow annually in all forms (student and staff) and directions.
- Active participant of AIESEC, IAESTE internship programs.
- 21 international joint-degree programs and protocols (4 undergraduate programs with State University of New York (SUNY); 17 graduate degree programs with universities in US and Europe) and one national dual PhD program with Hacettepe University.
- Member of various associations and networks focusing on international education and exchange such as UNICA, EUA, IIE, SEFI, EMUNI, Magna Carta Observatory, GISU, AIIA, D-8 (NPRI).
- ABET 'substantial equivalency' accreditation for all engineering programs.





METU/ODTÜ as a **prominent research university**

- Announced as the most successful research university for the last 5 years by the Higher Education Council of Türkiye
- Announced as the most entrepreneurial and innovative university for the last 5 years by the Scientific and Technological Research Council of Türkiye (TUBITAK)
- Leading research university in Türkiye in terms of depth and breadth of nationally- and internationally-funded R&D projects
- Active participation in the Horizon Programmes, as well as other Instrument for Pre-Accession Assistance (IPA) funds and other international programmes, such as COST, Erasmus+, Newton-Katip Çelebi Fund, etc.
- 31+ Interdisciplinary research centers. Some of METU's outstanding research centers: Micro-Electro-Mechanical Systems Research and Application Center (MEMS), Center of Excellence in Biomaterials and Tissue Engineering (BIOMATEN), Center for Solar Energy Research and Applications, Center for Robotics and AI (ROMER).



①

11-10-11
12/10/2017
11-10-11
11-10-11

METU/ODTÜ as a prominent research university



- More than 1/3 of all students are enrolled in graduate program and 230+ PhD degrees awarded annually.
- Competitive research revenues accounting to 20-25% on average of all METU expenditures annually (including all payroll costs).
- METU's rank among the most successful Turkish Research Institutions with respect to EU Framework Programmes.
 - 1st in the 7th Framework Programme
 - 2nd in the Horizon 2020 Programme
 - 1st in the Horizon Europe Programme
- 500+ international projects with a total budget of 1B € with a METU share of 90M €.
 - 55 H2020 projects with a total budget of ~ 243M € and a METU share of ~ 18M €. Among these projects, the number of ERC projects is 3, and the number of projects where METU is the consortium coordinator has reached 6.
 - 54 HE projects with a total budget of 219M € and a METU share of ~ 20M €. Among these projects, the number of ERC projects is 6.
 - METU has 260+ international R&D projects other than Horizon projects – US, UK, Danish, Qatar, UN grants etc. – with a METU share of 27+ M€.



METU/ODTÜ as a prominent research university

- 1,100+ national projects with a total budget of 500M TL (approx. 60M €).
- Top public university in the Research University Index-2019 of YÖK (Council of Higher Education of Türkiye) the Entrepreneur and Innovative University Index-2019 of TÜBİTAK (Scientific and Technological Research Council of Türkiye).
- METU's Technology Transfer Office (TTO): 180+ inventions, 35+ commercialized patents, 400+ patent applications, 250+ granted patents and more than 8M TL commercialized income.
- METU has HR Excellence in Research Award, which is given to research friendly universities.
- METU is the first Turkish university to receive HR Logo, that is an important symbol for the international visibility and reliability of universities.



ODTÜ TEKNOKENT

- The 1st TEKNOKENT (Teknopark) in Türkiye.
- ODTÜ TEKNOKENT currently houses 400+ companies and 10000+ employees. Around 90% of the companies are small and medium enterprises (SMEs).
- Its goal is to provide contemporary infrastructure and superstructure to researchers and companies that mutually develop and produce the technologies. With its activities to facilitate university-industry collaboration, ODTÜ TEKNOKENT is the catalyst for synergy between the parties.
 - Promote entrepreneurship and innovation: The incubation center at ODTÜ TEKNOKENT serves 40+ start-ups and micro-sized companies, most of which started their life as spin-offs from METU research projects.
- It has ranked 1st for seven times in the Technology Development Zones Performance Index study of the Ministry of Industry and Technology realized since 2011.
- USD 550 million in annual technology exports as of 2024.





Life on **Ankara Campus**

- A lively and vibrant campus.
- A self-sustaining 45 square kilometers (17-mile squares) campus with a forested area of 30 square kilometers (12-mile squares) including its very own lake, Lake Eymir as well as 20 dorms, many shops, restaurants, cafes, banks, medical center, museums, libraries and other facilities.
- Dormitory capacity of approximately 8,000 students with priority placement given to international students.
- A wide range of sports and recreational facilities, including gymnasiums, tennis courts, basketball and football fields, jogging trails, Olympic-size indoor swimming pool, and an outdoor swimming pool.







- As off campus facilities, lodges at Elmadağ (30 kilometers from the METU Ankara campus) and a mountain resort at Uludağ (near Bursa) where mountain climbing and various skiing activities are possible during winter for students and staff.
- About 140 students' clubs, 42 sport teams and 1000+ in-house cultural and sports activities organized by students each year.
- METU Cultural and Convention Center hosts numerous cultural, intellectual and arts activities throughout the year, open to the public.
- Estimated living expenses for students are minimally \$250.00 (on campus) to \$550.00 (off-campus) per month.





METU/ODTÜ contact info 2026

www.metu.edu.tr

Middle East Technical University
Üniversiteler Mahallesi,
Dumlupınar Blv. No:1 06800,
Ankara, Türkiye

f MiddleEastTechnicalUniversity
▶ middleeastechuniv
in orta-dogu-teknik-universitesi
@ metu_odtu

INTERNATIONAL COOPERATIONS OFFICE (ICO)

Serves as the office for exchange, study abroad programs, partnership & educational project development, liaison with embassies and national and international stakeholders as well as policy advising for internationalization.

✉ Second Floor of the Çatı Cafe Building
06800 METU Cankaya Ankara, Türkiye

@ ico@metu.edu.tr

🌐 <https://ico.metu.edu.tr>

☎ 0090 312 210 7180

📞 0090 312 210 7176

in metu-international-cooperations-office

INTERNATIONAL STUDENTS OFFICE (ISO)

Serves as the office for full time and degree seeking international students; recruitment, admission and administrative procedures.

✉ MM Building, 4th Floor, 06800 METU
Cankaya Ankara, Türkiye

@ iso@metu.edu.tr

🌐 <https://iso.metu.edu.tr>

☎ 0090 0312 210 7189

📞 0090 312 210 7960



