



MIDDLE EAST TECHNICAL UNIVERSITY

Erasmus+

International Credit Mobility

Prof. Dr. Ayşegül Daloğlu

International Credit Mobility (ICM)

Erasmus+ extends beyond Europe, allowing for mobility from and to other parts of the world (between 33 **Program** and 84 **Partner** Countries).

Program Countries are those countries participating fully in the Erasmus+ program.

Turkey is one of the 33 Program Countries.



ICM 2015 Application Period

- Applied on March 4, 2015
- Project Evaluation by Turkish National Agency
- Results announced in September, 2015
- Turkey's Budget: 4.571.153 €
- METU's Budget: 2.819.021 € (%61 of total budget)
- Project Period: June 1, 2015 – May 31, 2017

- Annual calls for proposals until 2021



Turkish Universities' Share in the ICM

- Orta Doğu Teknik Üniversitesi: 47 countries
- Anadolu Üniversitesi: 11 countries
- Hacettepe Üniversitesi: 4 countries
- Kadir Has Üniversitesi: 4 countries
- Selahaddin Eyyubi Üniversitesi: 3 countries
- Yıldırım Beyazıt Üniversitesi: 3 countries
- Niğde Üniversitesi: 2 countries
- Afyon Kocatepe Üniversitesi: 2 countries
- Kastamonu Üniversitesi: 2 countries
- Akdeniz Üniversitesi: 2 countries
- İstanbul Ticaret Üniversitesi: 2 countries
- Atatürk Üniversitesi: 2 countries
- Turgut Özal Üniversitesi: 1 country
- İstanbul Üniversitesi: 1 country
- İstanbul Kültür Üniversitesi: 1 country
- Kırklareli Üniversitesi: 1 country



METU's Partner Countries

47 countries around the globe:

- **EU's Eastern Neighborhood** (ENP East): Armenia, Azerbaijan, Belarus, Georgia, Moldova, Ukraine
- **EU's Southern Neighborhood** (ENP South): Egypt, Israel, Jordan, Lebanon, Morocco, Palestine, Tunisia
- **Russia**
- **Latin America**: Mexico, Colombia, Brazil
- **Asia**: Afghanistan, Bangladesh, Cambodia, China, India, Malaysia, Mongolia, Nepal, Pakistan, Philippines, Sri Lanka, Thailand
- **Central Asia**: Kazakhstan, Kyrgyzstan, Tajikistan, Turkmenistan, Uzbekistan
- **South Africa**
- **Western Balkans** (IPA): Albania, Bosnia and Herzegovina, Kosovo, Montenegro, Serbia
- **Industrialized Americas** (PI North America): Canada, USA
- **Industrialized Asia** (PI Asia): Australia, Brunei, Japan, (Republic of) Korea, Singapore



Mobility Flows & Financial Support

- Majority of the budget for **incoming** flow to Program Countries
- METU receives **Organizational Support (OS)**
 - 350 € per mobility (up to 100)
 - 200 € per mobility (from 101 on)

	INCOMING	OUTGOING
STUDENT (3-12 months)	Individual Support (monthly): 800 € Travel Support (once): 275 – 1100 € (acc. to distance)	Individual Support (monthly): 650 € Travel Support (once): 275 – 1100 € (acc. to distance)
ACAD. STAFF (Min. 5 days, Max. 2 months. Min. 8 hours teaching per week)	Individual Support (per day): 140 € (up to 14 days) and 98 € (from 15th day on) Travel Support (once): 275 – 1100 € (acc. to distance)	Individual Support (per day): 160 € (up to 14 days) and 112 € (from 15th day on) Travel Support (once): 275 – 1100 € (acc. to distance)

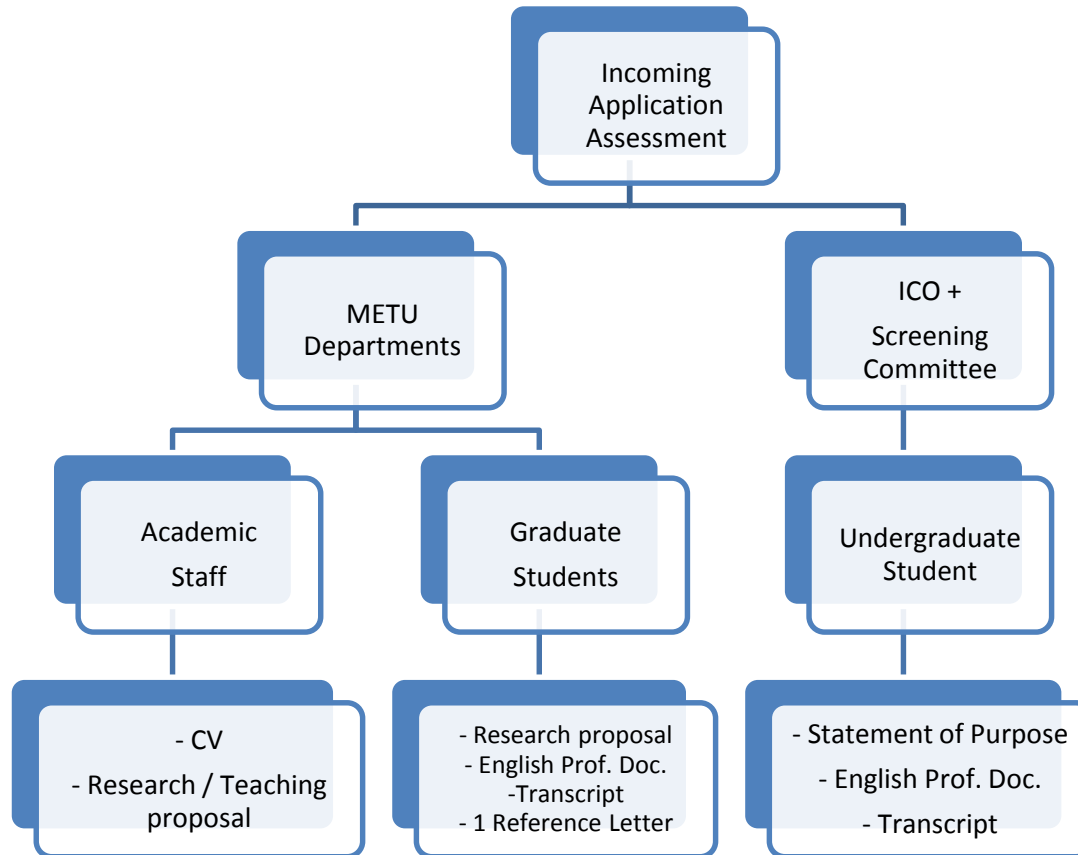


METU ICM Calendar

- Ongoing communications to establish establish agreements with **231 potential partners** in 47 countries
- **Incoming Application** (online): until mid-December 2015
- **Outgoing Application**: at the same time with regular Erasmus applications



Incoming Application Process



Useful Links

Inter-Institutional Agreement Draft

http://ec.europa.eu/education/opportunities/higher-education/doc/partner-programme-iaa_en.pdf

FAQs for Higher Education Institutions:

http://ec.europa.eu/education/opportunities/international-cooperation/documents/mobility-faqs_en.pdf

FAQs for Students & Staff (please see «Credit Mobility» section):

http://ec.europa.eu/education/opportunities/higher-education/doc/students-questions-answers_en.pdf

Erasmus+ Programme Guide:

http://ec.europa.eu/programmes/erasmus-plus/documents/erasmus-plus-programme-guide_en.pdf

